

Desergo™ Elite Steri Center (designed for 13-20 operatories)

When you need high-flow *at the highest volume* the **Desergo Elite Steri Center** is the answer. **Go big or go home.**

With double the autoclave and instrument washing capabilities, 30 gallons (or more) of trash management, and twice the clean storage capacity, the Elite will provide ample through-put for the busiest of dental practices.



COLOR CHOICES

Cabinet Color/Finish Selection:

- Cabinet available in standard EP color choices.
- or - Upgrade to woodgrain finish. (Standard EP selections)

CONFIGURATIONS

Upper Cabinet Shelves

- Triple Pulldowns on Cassette and Storage Cabinets. Overall-height: 8'6"
- Double Pulldowns on Cassette and Storage Cabinets. Overall-height is 7'6-3/4", and is ideal for offices with lower ceiling heights. (Item numbers will be different in this case.)

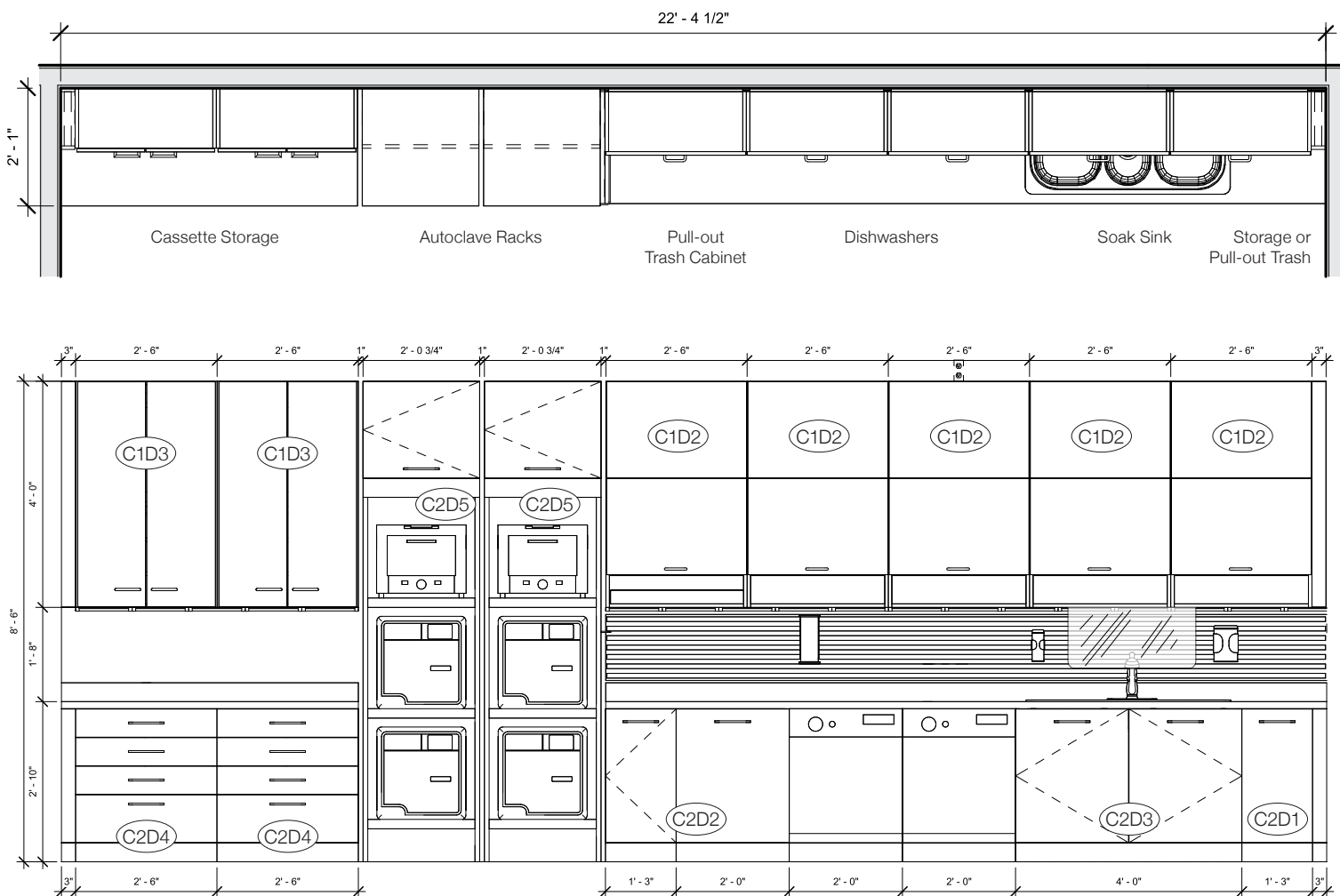
Autoclave Rack

- 2 racks as shown
- or - Single, 36" wide rack for larger autoclave (ie: Tuttnauer MDMaxx)

Far Right Cabinet (C2D1)

- Swing-door Storage
- or - Pull-out Trash (15 gal.)





Countertops for the **Desergo Steri Center** line can be finished in a variety of materials. **We recommend CORIAN for its durability in a medical environment.** To **reduce your costs**, and **provide the best custom fit possible**, countertops and sinks should be sourced locally. Ask our clinical specialists for details.

INCLUDED COMPONENTS

Upper Cabinetry (left to right)

- 2 Clean Cassette Triple Pulldowns (C1D3)
- 2 Autoclave Racks (C2D5). Instruments not included.
- 5 Sterilization Triple Pulldowns (C1D2)

Base Cabinetry (left to right)

- 30" 4-drawer Cabinet (C2D4)
- 30 gal. pull-out Trash (C2D2)
- Space for two 24" Dishwashers (washers not included)
- Double swing-door under-sink Storage (C2D3) (sink, drain and faucet not included)
- 18" Swing-door Cabinet - or - 15 gal. Pull-out Trash (C2D1)

Middle (left to right)

- Full-length, under-cabinet lighting
- Over 12-1/2' of Slat Wall
- Polycarbonate Splash-guard

Slat Wall Accessories - Choose any 8 items (see page 22 for details):

Glove Box holder, Sharps holder, Wipes holder, Remote holder, Pad & Pen holder, Gift Bag bracket, Printer shelf, Monitor bracket

