



ergonomic products™
Performance Without Compromise®

2019 Productivity Solutions



Universal Headwall™

The following pages excerpted from Ergonomic Products catalog: [950-076revD](#) [Click here to download full catalog](#)

www.ergonomic-products.com



The Universal Headwall is built to **maximize utility & efficiency** of our operatory designs and industry-leading delivery systems.

Standard Features

C1B1 - Computer Storage Cabinet

- 4.4 cubic feet for storage, with access doors on each side
- Full extension Slide-out Shelf for CPU (right side of cabinet)
- Adjustable Shelves for bulk storage (left side)
- Monitor Mounting Bracket (monitor not included)

M3C1 - Slat Wall

- Nearly 5 sq ft of Slat Wall to display and store accessory materials.
- Corian Top-cap included

C2B1 - Universal Work Center

- 4 sq ft of solid Corian work surface
- Retractable counter extensions provide an additional 2 sq ft of work surface
- 2 deep Storage Drawers
- Quick Connect Umbilical port (standard)
- Utility Access Panel

CONFIGURATION and UPGRADE CHOICES

Cabinet Color/Finish Selection:

- Cabinet available in standard EP color choices.
- or - Upgrade to woodgrain finish. (Standard EP selections)

Corian Work Surface:

- Corian available in standard EP Corian color choices.

Utility Configuration

- Standard Umbilical Quick Connect
- **OR** - Snoot Mount
- **OR** - No utility opening (solid face)
- Optional Sink Upgrade for C2B1 Work Center - Item #315-015**
Sink option includes stainless steel sink & chrome faucet.
Supplied with Corian backsplash (if not using Slat Wall).

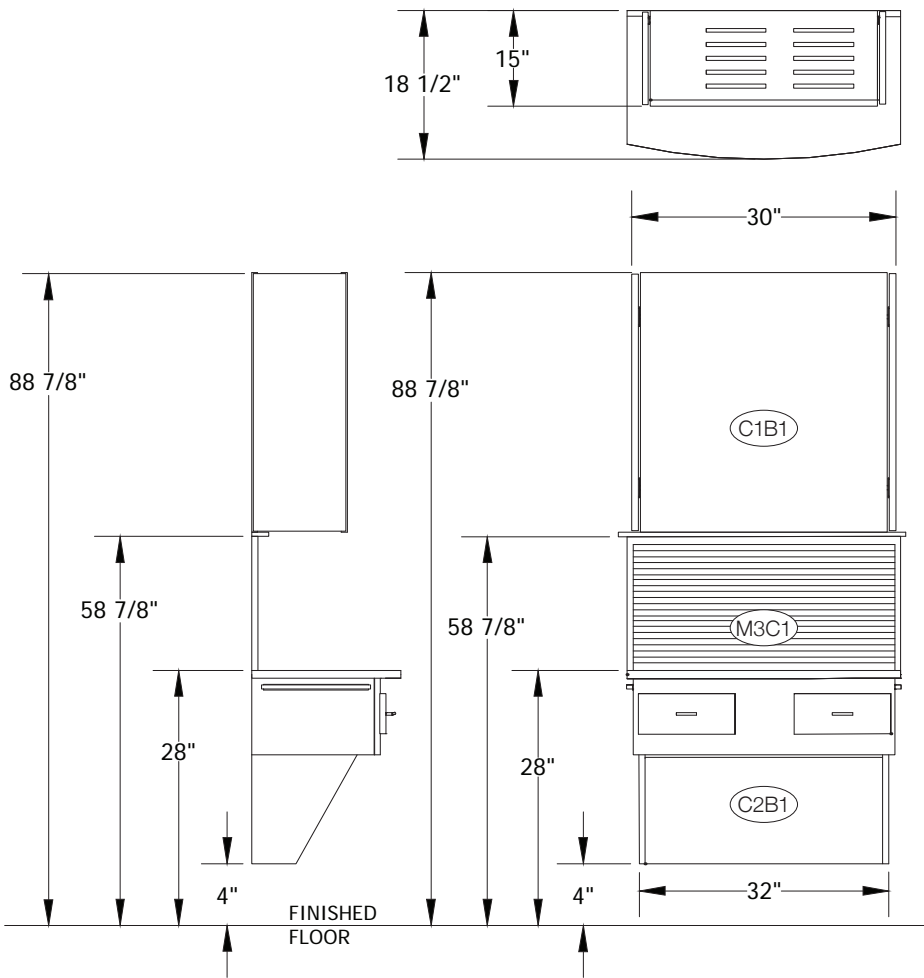
The Universal Headwall above is shown with a range of Slat-Wall accessories. Ergonomic Products offers the items below, and others are available from a variety of resellers.

- Med-waste bracket
- Remote control holder
- Sanitation Wipes holder
- Pad & Pen holder
- "Goodie Bag" brackets
- Printer Shelf
- Monitor Bracket

See page 72 for details.



Dimensions & Utilities



Electrical Specifications

120v AC, 60HZ, 8A
Cat 5 (or better) Data Jack

Air / Vacuum Specifications

Air: 3/8" Dental Style Female QD, 80 psi
Vacuum: 1/2" Copper or PVC Pipe

Plumbing Specifications

Dental Line feed:
- 1/2" Cold or Dedicated Dental supply line with straight 1/4 turn-stop and 3/8" compression

If Unit C2B1 is purchased with Sink -

Sink feed:
- 1/2" Hot & Cold domestic supply lines with straight 1/4 turn-stop and 3/8" compression
- 1-1/2" DWV with P-Trap

Ideal Room Location

The Universal Headwall is a highly efficient utility, storage and workcenter. It is most effective when used in a dual / head-entry format.

In conjunction with the Universal Workstation, this creates an ideal ergonomic production zone that is both highly efficient - and out of the patient's line-of-site on entry to the operatory.

